

Tidal Transit Charters Umoe Unda's WaveCraft



Tidal Transit Limited has entered into a Ship Management contract with Umoe Unda to be the UK operator of their Surface Effect Ship.

Umoe Firmus is a WaveCraft, which uses an air cushion between its catamaran hulls to lift 80% of the vessel out of the water. The small draught that this creates provides the vessel with easy access to ports, and enables it to travel at high speeds [40 knots] whilst maintaining a low fuel consumption resulting in a range of more than 700 nautical miles.

This is Umoe Mandal's second commercial vessel while the first one was chartered to Dong Energy for use at its Borkum Riffgrund Wind Farm off the coast of Germany.

Tidal Transit Commercial Director Leo Hambro said: *"This is an exceptionally well designed and engineered vessel, and our skippers and their crews are greatly looking forward to their vessel induction and training programmes which will take place on the Umoe Ventus over the coming months."*

The vessel is expected to arrive in the UK by mid-February 2016.

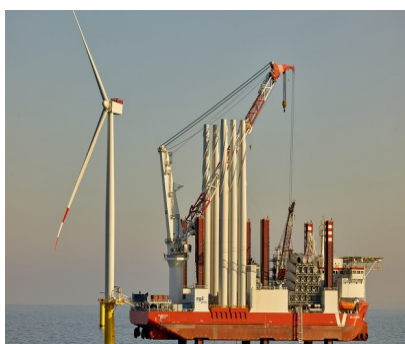
Image: ni4b

Share this article

Follow Offshore Wind

Posted on September 3, 2015 with tags [Tidal Transit](#), [Umoe Unda](#), [WaveCraft](#).

Popular Articles



Amrumbank West OWF Fully Operational

October 22, 2015 [read more →](#)



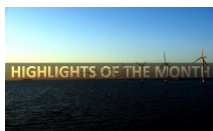
SHL: Offshore Wind Industry Maturing in Europe (Interview)

October 21, 2015 [read more →](#)



IWES to Test Adwen's 8MW Turbine

October 7, 2015 [read more →](#)



Highlights of the Month: September 2015

October 2, 2015 [read more →](#)

Events

Jobs

Vessels