



Windflex 27 Quad IPS



24 Passenger Crew Transfer Vessel

Key Specifications:

27m length, 9m beam, 1.4m draft - BV Classed - UK Flag - GT/NT 107

85m² foredeck / 35m² aftdeck - 20 MT cargo capacity

Container fixing for 3x10ft / 1x20ft

Palfinger PK23500MB Crane

Quad Volvo D13 & IPS900 providing enhanced manoeuvrability, fuel efficiency and quad redundancy

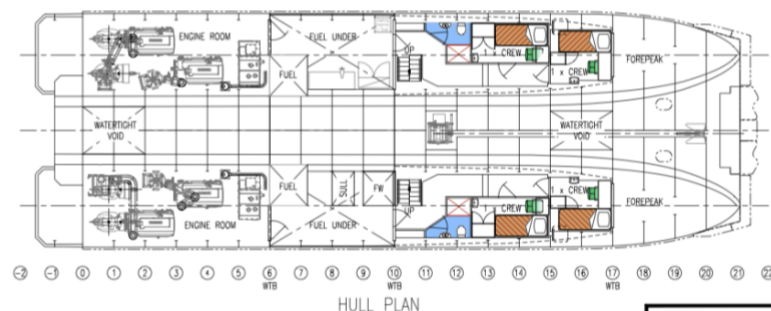
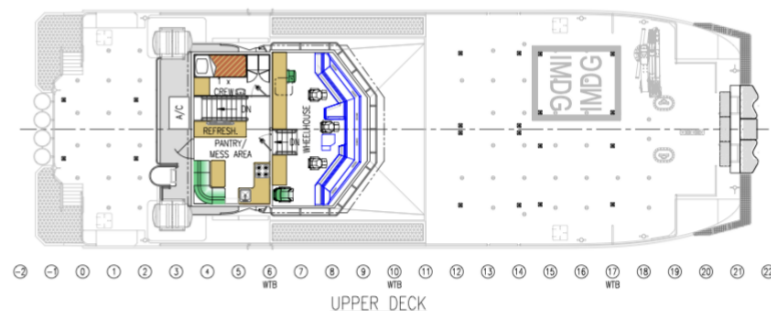
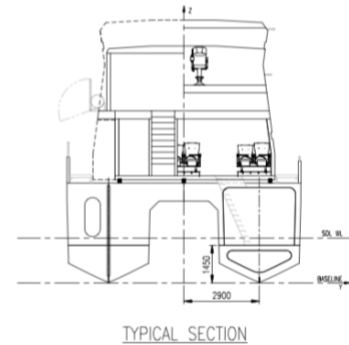
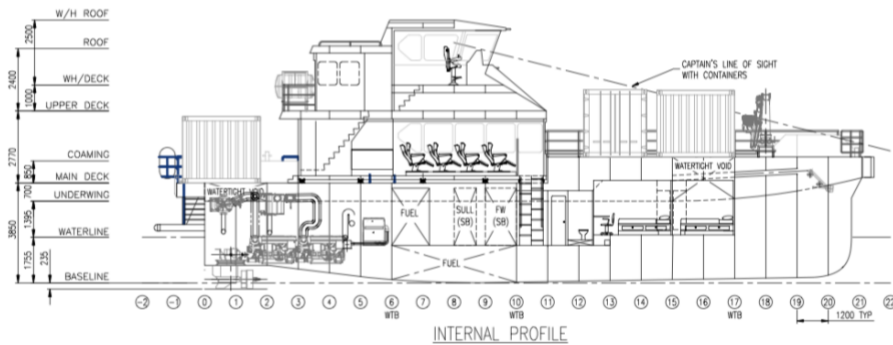
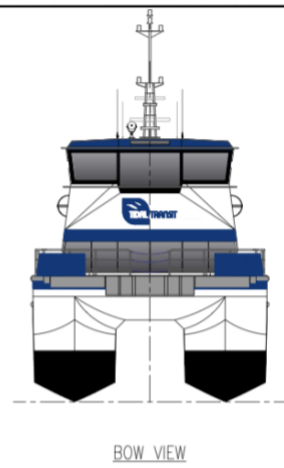
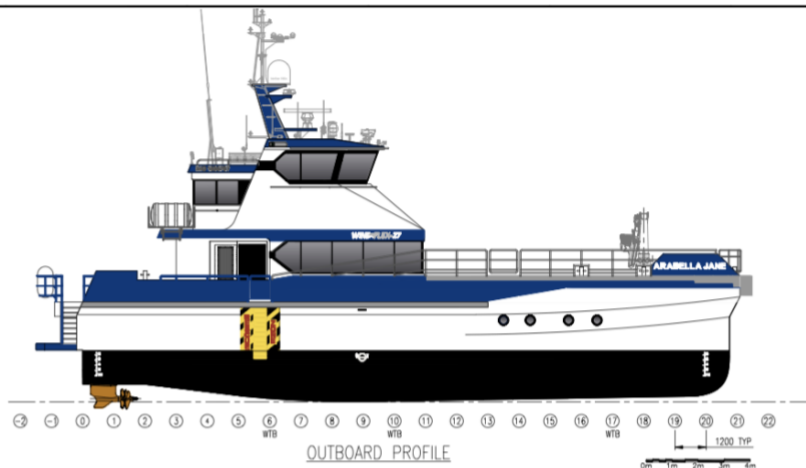
Active impact adsorption combined with Buoyant Works bow fendering

Max Speed of 27kn and 17 tons of bollard push

Ecomotus Catalytic Hydrogen system for tier III emissions equivalence and fuel savings

Marfle VMMS and remote monitoring

Available in UK/EU from May 2024



SPECIFICATIONS

OVERALL LENGTH (EXCL APPENDAGES):	27.1m
WATERLINE LENGTH:	24.9m
LOAD LINE LENGTH:	23.9m
BEAM (NOT INCLUDING SPONSONS):	9.0m
DRAFT (HULL):	1.4m
PERSONNEL:	24
CREW:	5
CONSTRUCTION:	ALUMINIUM
HULL:	ALUMINIUM
SUPERSTRUCTURE:	2 x 13,000 I
FUEL OIL:	2 x 4,750 I
FRESH WATER:	1 x 3,500 I
SULLAGE:	1 x 2,500 I
MAX. DEADWEIGHT:	50t
GENSETS:	2 x CUMMINS OHAN 40MDDCT
MAIN ENGINES:	4 x VOLVO PENTA D13
RATED POWER:	4 x 515kW @ 2250 RPM
PROPULSION:	4 x PENTA IPS900



Incat Crowther
 PO BOX 179 Torrey Hills NSW 2084 Australia
 P: +61 2 9550 0407 F: +61 2 9550 0408
 info@incatcrowther.com
 www.incatcrowther.com

PROPRIETARY INFORMATION - COPYRIGHT All Rights Reserved
 If external sources. The document is supplied on the basis that while Incat Crowther retains all the information it will be correct at the time of publication, it does not warrant its accuracy or completeness and to the full extent allowed by law excludes liability in contract, tort or otherwise, for any loss or damage suffered by the recipient, or any third person or body corporate arising from or in connection with the supply or use of the information or any part of the information in this document. Incat Crowther Pty Ltd ACN 104 858 791.
 One boat only from this set of plans.

DESIGN	PENGUIN WINDFLEX-27 IPS 900				
DESCRIPTION	GENERAL ARRANGEMENT				
DESIGN No.	IC18192		SHEET No. D-011-02		
DRAWN	DATE	CHECKED	PROJ. MAN.	SCALE	
CJW	06OCT22	JWL		1:100 (U.N.O.)	
DO NOT SCALE DIMENSIONS IN MILLIMETRES UNLESS NOTED					A1

C	UPDATE TIDAL TRANSIT COLOUR SCHEME	PSI	15NOV23
B	UPDATE MAIN DECK LAYOUT	PSI	31OCT23
A	FIRST ISSUE	CJW	06OCT22
NO.	REVISION	DRAWN	DATE

Vessel Name	Arabella Jane		
Owner	Tidal Transit Ltd	Deck & Equipment	
Operator	Tidal Transit Ltd	Cargo Capacity (t)	20
Callsign	TBC	Cargo Capacity Fore (t)	15
MMSI Number	TBC	Cargo Capacity Aft (t)	5
Registration Number	TBC	Specific Deck Load (t/m2)	2
Construction Country	Indonesia	Crane Specification	Palfinger PK23500MB
Shipyard	Penguin Shipyard Asia PTE LTD	Crane Location	Port Foredeck
Main Particulars		Crane Radius (m)	10
Flag	UK	Crane Reach Over Ship Side (m)	9
Hull Type	CAT	Free Deck Space Aft (m2)	35
Hull Material	Aluminium	Free Deck Space Fwd (m2)	85
Classification	Bureau Veritas I † Hull ● Mach Wind Farm Service Ship - M0 - Sea Area 3	Fuel Transfer Pump	yes
Number of Crew	Min 3	Fuel Transfer Capacity (l/h)	40
Number of PAX	24	Fuel Transfer Height (m)	40
LOA (m)	27.1	HP Washer	Yes
Beam (m)	9	HP Washer Hose Length (m)	39
Design Draft (m)	1.4	Oily Bilge Discharge Connection	No - Manual
Max. Draft (m)	1.65	Sewage Discharge Connection	Yes
Min. Water Depth for Operation (m)	1.8	Container Position	Yes
Bow Height (m)	3.5	Container Pos. 10'	3
Freeboard height at gangway (m)	2.5	Contanier Pos. 20'	1
Lightship Displacement (t)	93	Safety Equipment	
Max Deadweight Displacement (t)	50/60	Liferafts Position	Above side deck
Fresh Water Capacity (l)	3500	Liferafts Persons accomodated	2x35
Fuel Capacity (l)	35500	Immersion suits no.	4+passengers own
Gross Tonnage	<200	Thermal protective aids no.	30
Operational Particulars		Life jackets no.	30
Bollard Push (t)	17	Man Over Board Equipment	SB Rescue Sling
Service Speed (kn)	25	Search Lights no.	1
Service Speed at 1.5Hs (kn)	22	Search Lights remote	0
Max Speed (kn)	26.5	Search Lights portable	0
Max Speed at 1.5Hs (kn)	24	Defibrilator	1
Max. Significant Wave Height for Operation (m)	2	Navigation & Comms	
Hs Performance 360 deg (m)	1.75	Crewfinder system corresponding to PLBs used on site	Yes
Machinery		GPS	Simrad P3007
Engine type and manufacturer	Volvo Penta D13 (tier II)	Communication system between helmsman and deck crew	Yes
Number of engines	4	Radar Reflector	Yes
Total Installed Power (kW)	2060	AIS class A	Simrad V5035
Fuel Consumption at 20kn (l/h)	309 (before Ecomotus)	Rudder Angle Indicator	n/a
Fuel Consumption at max speed (l/h)	544 (before Ecomotus)	Radar with plotting function	Simrad R5024 12U / 6 HSC
Fuel Consumption at service speed (l/h)	442 (before Ecomotus)	Echo sounding device	Simrad S3009
Gearbox Manufacturer	Volvo	Gyro or satellite compass	Simrad P3007 w HS80A
Propulsion Type	IPS	GMDSS radio equipment	Sea Area A2
Propulsion Description	IPS 30	Handheld VHF for deck personnel	Sailor
Bow Thruster (nos.)	n/a	Emergency Position Indicating Radio Beacon (EPIRB)	McMurdo R5
Bow Thruster Power (kW/pcs.)	n/a	Search and Rescue Transponder (SART)	McMurdo E8
Accommodation		Firefighting Appliances	
Mess / Pantry	Yes	Approved FIFI Systems in ER	Yes
Toilet	2	Portable Extinguishers	Yes
Shower	0	Fire Pumps	Yes
Wet changing room	Yes	Fire Hoses	Yes
HVAC	Yes	Additional Features	
Noise in Pass Area (dB)	<70	CCTV monitoring and recording of ops.	Yes
Noise in Wheelhouse (dB)	<65	Vessel Motion Monitoring System	Marfle
Seating No.	24		
Seating Type	Business Class		



tidal-transit.com

01328 854225

Tidal Transit Limited

Unit 6 North Creake Airfield Business Park,
Bunkers Hill, Egmore,
Walsingham, Norfolk NR22 6AZ
United Kingdom
charter@tidal-transit.com